

PRICE LIST



DISCOVER THE TRANSFORMATION TODAY –YOUR SKIN DESERVES IT.

OPTIPHI INDULGENT FACIAL

R800

Treats a multitude of skin concerns with the use of peptides, botanicals and carefully selected active ingredients. Tailored according to skin concerns.

OPTIPHI DEEP CLEANSE

R450

Uses Enzyme exfoliation to remove congestion and clean blocked pores. Clarify mouse probiotic mask is designed to rebalance skin's microbiome. Provides a fresh, cool feeling to the skin.

OPTIPHI BALANCING FACIAL

R600

Gentle facial, designed for any skin type. Promotes cell activity and increases circulation & cell activity.

OPTIPHI SKIN REJUVENATION PEEL

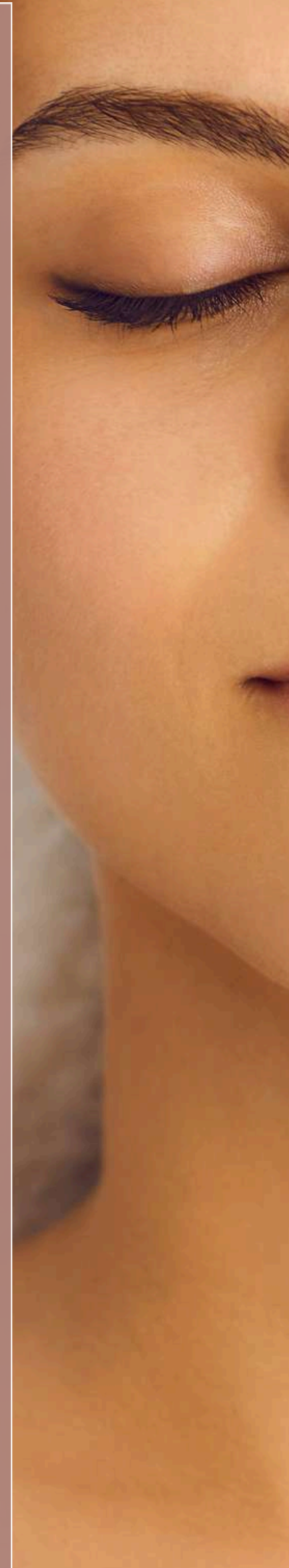
R730

Experience true skin rejuvenation results without the nasty side effects generally associated with peeling. The skin rejuvenation peel is the first peeling system to offer a solution to all skin conditions by combining the regenerative capabilities of Glycolic Acid and intensely hydrating active ingredients. No down time... can be used even on sensitive skin.

30/ 30 PEEL

R780

The combination of 30% Glycolic Acid, 30% Ascorbic Acid and Glycyrrhetic acid. This trio of acids, synergistically and directly targets the signs of UV-induced aging, pigmentation and skin immunity. Boosting collagen production and protection. The addition of the potent anti-oxidant to the peel formulation delivers a powerful calming effect on the skin, reduces skin sensitivity and redness.



PRICE LIST



OPTIPHI QUADRACTION RETINOL PEEL

R900

Treats a multitude of skin concerns with the use of Retinol and bio retinols. This peel, neutralize free radicals and boost the production of elastin and collagen. This creates a "plumping" effect that reduces the appearance of fine lines, wrinkles and enlarged pores. At the same time, retinol has an exfoliating effect on the skin's surface that can further improve texture and tone. We also include a take home serum in this treatment to help with inflammation and recovery for optimal results.

OPTIPHI DELTA PEELS

50 % GLYCOLIC

R800

30/50 % GLYCOLIC AND GLYCYRRHETINIC

R850

OPTIPHI INEED PRO MICRONEEDLING

Face: R1200

Face & neck R1400

This revolutionary micro-needling device aims to tighten, lift and rejuvenate skin. Visibly improve the appearance of fine lines, wrinkles, stretchmarks and scars. When the needle tip makes contact with the skin, the needles create tiny punctures into the skin surface, causing micro-trauma, and inducing a wound healing response, and subsequently, the creation of new healthy collagen. The punctures also act as micro-channels that carry topical nutrients used during the treatment, deep into skin layers for an increased effect

DERMAPLANING ADD ON

R200

OPTIPHI EYE TREATMENT ADD ON

R370

PRICE LIST



CALMTOUCH SKIN TREATMENT

R650

CalmTouch Skin Treatment

A soothing, therapeutic treatment for sensitive skin conditions like rosacea, eczema, and irritation. Infused with anti-inflammatory ingredients like Tranexamic Acid and Devils Claw, it calms redness, restores hydration, and strengthens the skin's barrier.

AHA+ CHEMIPEEL TREATMENT

R650

An advanced resurfacing treatment with BHA & AHA to boost cell renewal, refine texture, and reveal smoother, more radiant skin. Not suitable for sensitive or sensitised skin.

D-AGE 5 CHEMIPEEL TREATMENT

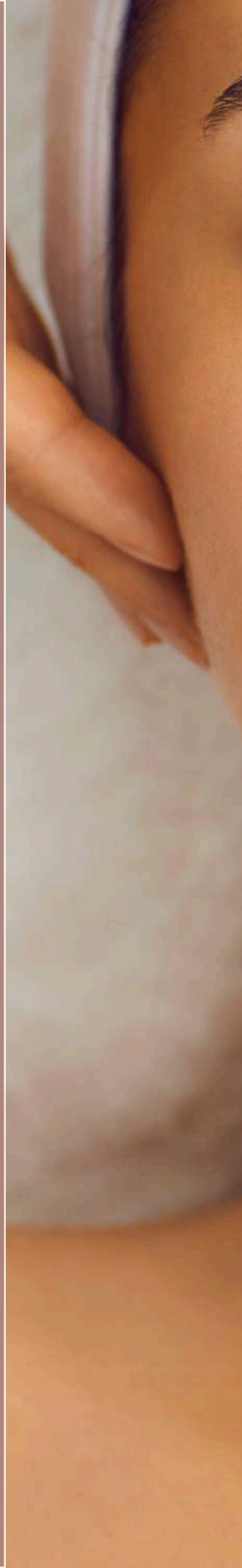
R650

D-AGE5 Chemipeel Complex is compounded with Mandelic acid including Be-ta-hydroxy and Alpha Hydroxy acids. The application effectively de-ages the skin, targets hyperpigmentation and assists with problematic skin conditions. This treatment will refine the appearance of pores, fine lines leaving the skin smoother, detexturised and radiant.

TCA CHEMIPEEL TREATMENT

R700

A medium-depth chemical peel using Trichloroacetic Acid to exfoliate dead skin cells and boost cell renewal. This treatment visibly smooths skin texture, softens fine lines and wrinkles, refines enlarged pores, fades pigmentation, and improves acne scarring. Skin appears clearer, brighter, and rejuvenated. Not suitable for sensitive or sensitised skin types.



PRICE LIST



DMK DEEP CLEANSE

R550

DMK deep cleanse facial is suitable for any skin type. This treatment aims to remove congestion and black heads and full leave your skin feeling clean and fresh.

DMK PRO ALPHA PEEL

R700

The DMK Pro Alpha peel is designed to rejuvenate and revive dull aged skin. A combination of Alpha hydroxy acids and hydrating ingredients will leave your skin feeling energized and vibrant.

DMK ENZYME TREATMENT #1

R950

This treatment is one of a kind. World wide known as the DMK Enzyme signature treatment. Designed to increase chemical processed in the body to restore and rebuild what was damaged and needed. All skin conditions benefit from this treatment, it brings skin back to perfect balance. This treatment Stimulates Langerhans cells with responds to the skin's ummune system.

DMK A-LIFT ENZYME #2

R1200

Designed to stimulate collagen and elastin production. Enzyme #2 is used for muscle Banding technique were we stimulate muscle contraction to create lifting. This treatment will leave you with tight glowing skin.

PRICE LIST



WAXING FACE

Brow wax	R150
Lip wax	R100
Lip & brow wax	R250
Facial wax (sides)	R300

BODY WAXING

Hollywood	R330
Brizilian	R280
G-string	R220
Bikini	R200
Full leg	R290
Half leg	R250
Underarm	R140

TINTING

Lash tint	R250
Brow tint	R120
Lash & brow tint	R350

DERMAPLANING	R380
--------------	------

MASSAGE

Back and neck massage 30min	R500
Full body massage 60min	R900



Experience the ultimate

O

This program is designed for clients that is invested in their skin care journey. You will automaticly become a member if you book your treatments every 4-6 weeks. We reconise that you take your skin care seriously, so from our side we would like to invest in you.

BENEFITS OF BEING A MEMBER

- Free brow tint & shape with your treatment
- Recieve special discount on retail products

DISCOVER THE TRANSFORMATION TODAY –YOUR SKIN DESERVES IT.
